

Stainless steel piston pump



Application example ▶

For shallow wells and well points. These pumps can also be used in the food industry (sugar bush, liquid transfer). It could also be used on farms, residences, cottages, solar applications, sprinkling systems.



Pulsation dampener is included with each syrup model. Reduces vibrations and pulsation.

	Part number	Model	H.P.	Capacity	Suction inch (mm)	Discharge inch (mm)	Shipping weight lb (kg)	
SYRUP/HOT WATER	521-0105	S-275 S/S with motor	1/2	275 gal/h(1040 l/h)	1 ¼" (31.8)	1" (25.4)	68 (31)	
	521-0110	S-275 S/S pump only			1 ¼" (31.8)	1" (25.4)	45 (20)	
	521-0125	S-600 S/S with motor	3/4	600 gal/h (2271 l/h)	1 ¼" (31.8)	1" (25.4)	72 (33)	
	521-0130	S-600 S/S pump only			1 ¼" (31.8)	1" (25.4)	45 (20)	
	Stainless steel pump body only							
	521-0175	S-275 S/S body			1 ¼" (31.8)	1" (25.4)		
	521-0185	S-600 S/S body			1 ¼" (31.8)	1" (25.4)		
	019-9000	Pulsation dampener ZEP-1 S/S						
COLD WATER	521-0405	S-275 S/S with motor	1/3	275 gal/h (1040 l/h)	1 ¼" (31.8)	1" (25.4)	60 (27)	
	521-0410	S-275 S/S pump only			1 ¼" (31.8)	1" (25.4)	45 (20)	
	521-0425	S-600 S/S with motor	1/2	600 gal/h(2271 l/h)	1 ¼" (31.8)	1" (25.4)	68 (31)	
	521-0430	S-600 S/S pump only			1 ¼" (31.8)	1" (25.4)	45 (20)	
	Stainless steel pump body only							
	521-0190	S-275 S/S body			1 ¼" (31.8)	1" (25.4)		
	521-0195	S-600 S/S body			1 ¼" (31.8)	1" (25.4)		

FEATURES

- On site maintenance possible due to an easy access to internal parts
- Built tough for longer life span
- Constant pumping even with presence of air in the water
- Double-action piston, single cylinder
- Continuous efficiency at various pressures.
- Increased resistance to particles in water.
- Priming up to 25 feet (7.62 m)
- Safety valve 100 PSI
- Available in 2 models (S-275 S/S, S-600 S/S)
- 2 versions: **Complete Pump:** pump and motor

CHARACTERISTICS

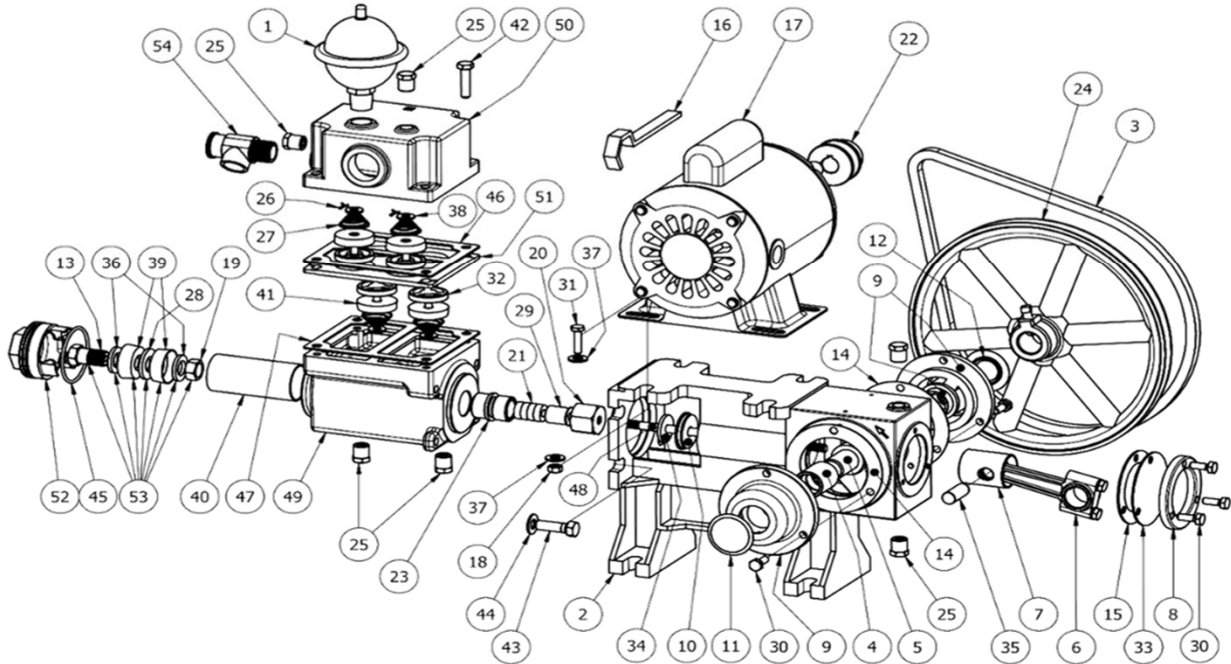
- Components in contact with liquid are all made of 304 stainless steel.
- Heat proof NYLON valves and cups (*syrup/hot water version*)
- Rubber valves and leather cups (*cold water version*)
- Pressure switch included (*cold water version*) with motor.

Each pump is tested at our factory.



Replacement parts

Stainless steel piston pump (hot water version)



#	Part number	Description
1	019-9000	ZEP 1 TANK S/S
2	522-0300	PUMP BODY
3	522-0301	V-BELT (4L-360)
4	522-0302	CRANKSHAFT BUSHING
5	522-0800	CRANKSHAFT
6	522-0803	BRASS CONNECTING ROD ASSEMBLY
7	522-0804	PISTON HEAD
8	522-0805	CRANKCASE COVER
9	522-0809	CRANKSHAFT BEARING ASSEMBLY (ITEMS 4,11)
10	522-0812	PISTON ROD GUIDE
11	522-0818	CRANKSHAFT BEARING PLUG (CLOSE)
12	522-0828	CRANKSHAFT BEARING PLUG (OPEN)
13	522-2001	S/S PISTON BOLT
14	522-2202	CRANKSHAFT BEARING GASKET
15	522-2205	PUMP BODY GASKET
16	522-2800	PACKING BOX NUT KEY
17	522-3001	1/2 HP MOTOR (S-275SS)
17	522-3003	3/4 HP MOTOR (S-275SS)
18	522-3101	1/4 X 20 HEXAGONAL NUT (PLATED)
19	522-3102	S/S PISTON JAM NUT
20	522-3501	S/S PACKING BOX NUT
21	522-3502	PACKING KIT (4)
22	522-3504	MOTOR PULLEY 1 3/4" O.D. SS-275
22	522-3505	MOTOR PULLEY 2" O.D. SS-600
23	522-3506	S/S PACKING BOX
24	522-3509	10" PUMP PULLEY—7/8" BORE
25	522-3510	1/4" NPT S/S PLUG
26	522-3512	CUTTER PIN
27	522-4201	SPRING VALVE
28	522-4206	S-275SS PISTON SPACER
28	522-4208	S-600SS PISTON SPACER

#	Part number	Description
29	522-4210	S/S PACKING BOX SLEEVE
30	522-4218	14-20 X 3/4" HEXAGONAL BOLT (PLATED)
31	522-4219	1/4-20 X 1" HEXAGONAL BOLT (PLATED)
32	522-5101	S/S VALVE SEAT
33	522-5105	WINDOW
34	522-5303	ROD WIPER
35	522-5305	HEAD PISTON PIN
36	522-5306	S-275SS PISTON WASHER
36	522-5308	S-600SS PISTON WASHER
37	522-5311	1/4" WASHER (PLATED)
38	522-5312	1/4" WASHER (S/S)
39	522-6275	S-275SS NYLON PISTON CUP
39	522-6600	S-600SS NYLON PISTON CUP
40	522-6725	S-275SS S/S CYLINDER
40	522-0817	S-600SS CYLINDER
41	522-7050	NYLON VALVE
42	522-7405	5/16-18 X 1 1/4" HEX BOLT (S/S)
43	522-7410	3/8-16 X 1 1/4" HEX BOLT (S/S)
44	522-7415	3/8" S/S WASHER
45	522-7450	O-RING
46	522-7480	WATER BOX SEAL
47	522-7480	WATER BOX SEAL
48	522-7600	S/S PISTON PUMP ROD
49	522-8000	S/S WATER BOX
50	522-8030	S/S AIR CHAMBER
51	522-8052	S/S SEAT PLATE ASS'Y
52	522-8100	S/S PISTON PLUG
53	522-8200	S-275SS ASS'Y PISTON
53	522-8202	S-600SS ASS'Y PISTON
54	711-0050	RELIEF VALVE S/S